



Woodside, Cobham, KT11 2PB
£3,000 PCM

SITUATION AND DESCRIPTION

Five bedroom detached family home in a great location at the top of Water Lane, with large garage and garden. Rental is for one year only.

ENTRANCE HALL

Under-stairs coats cupboard

LIVING ROOM

Twin aspect with doors to rear garden. Feature fireplace (fire out of service).

DINING ROOM

FAMILY ROOM

KITCHEN/BREAKFAST ROOM

Rear aspect with range of wall

and base units with worktop over. Integrated appliances including fridge, dishwasher, oven, grill and hob.

UTILITY ROOM

Door to garage and garden.

MASTER BEDROOM

Range of fitted wardrobes. Door to:

EN SUITE BATHROOM

BEDROOM TWO

Fitted wardrobes.

BEDROOM THREE

Fitted wardrobes.

BEDROOM FOUR

Fitted wardrobes.

BEDROOM FIVE/STUDY

FAMILY BATHROOM

GARAGE

Double garage with up and over doors.

REAR GARDEN

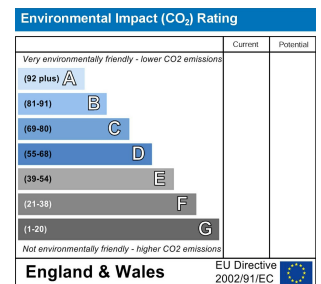
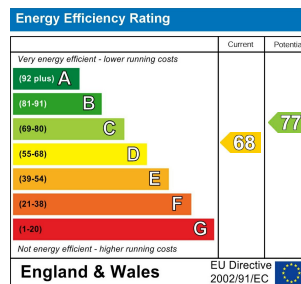
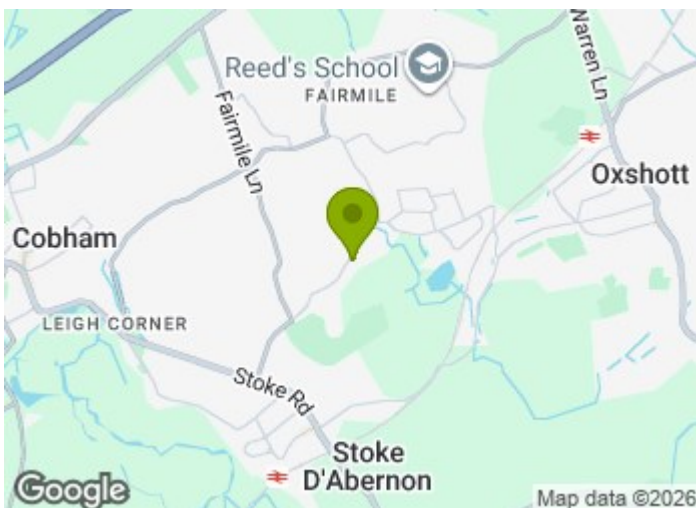
Spacious mature garden to side and rear

FRONT GARDEN

Driveway with ample off street parking.

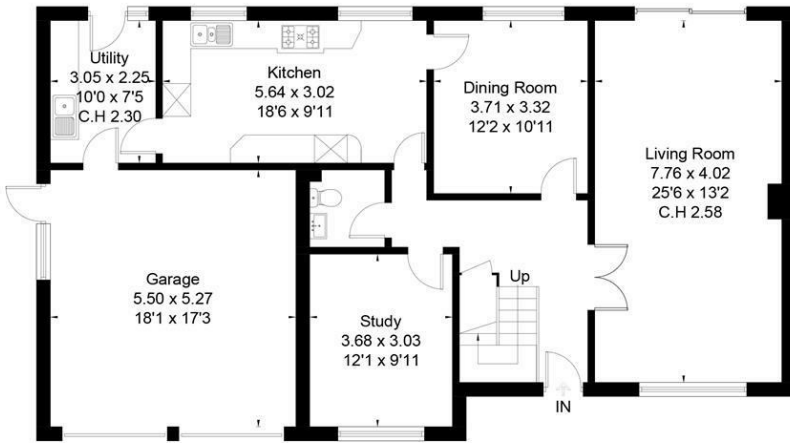
COUNCIL TAX

Band G - £4,070.10 (2025/26)

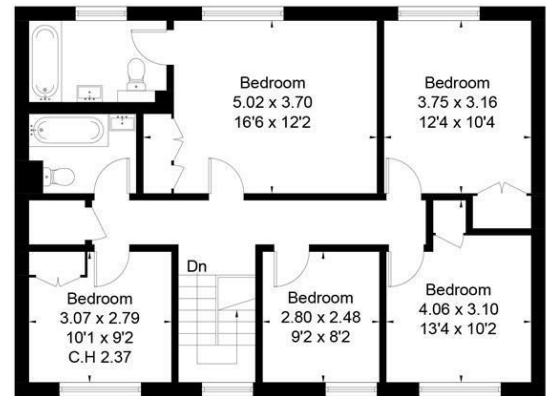




Approximate Floor Area (Including Garage) = 212.8 sq m / 2291 sq ft



Ground Floor



First Floor



This floor plan has been drawn in accordance with RICS Property Measurement 2nd edition.
All measurements, including the floor area, are approximate and for illustrative purposes only. @fourwalls-group.com # 102300